

SENSORDATEN

ANWENDUNG

Rißprüfung an mehrlagigen verschraubten oder vernieteten Blechen.
Geringer Einfluß von FE-Schrauben und Nieten durch fokussiertes, ringförmiges Wirbelstromfeld.

SPULENSYSTEM

Absolut-Ferritkern, transformatorisch

FREQUENZBEREICH

30 Hz - 5 kHz

AKTIVER BEREICH

Durchmesserabhängig ($d_A = d_i + 15$)

EINDRINGTIEFE

Ca. 4 - 10 mm (durchmesserabhängig)

TECHNISCHE DATEN

KABEL: Alle Kabel der EK-X-HF/1 und EK-X-007-Serie

GEHÄUSE: Kunststoff (Delrin)/Edelstahl

DURCHMESSER: 8 - 26 mm

GEWICHT: 30 - 50 g

BESTELLDATEN

di 4,8 mm = ASP02004

di 6,3 mm = ASP02006

di 8,0 mm = ASP02010

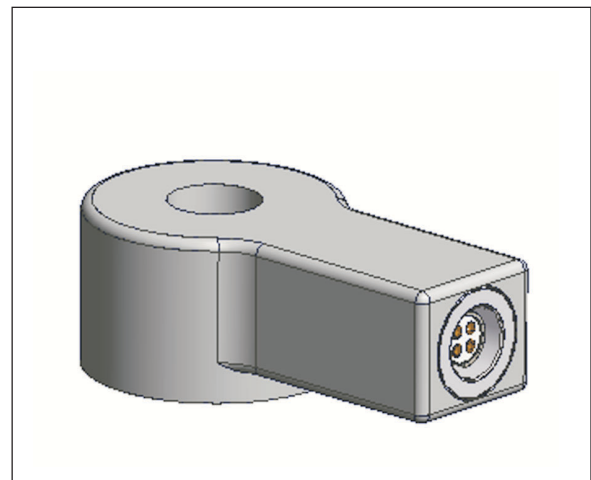
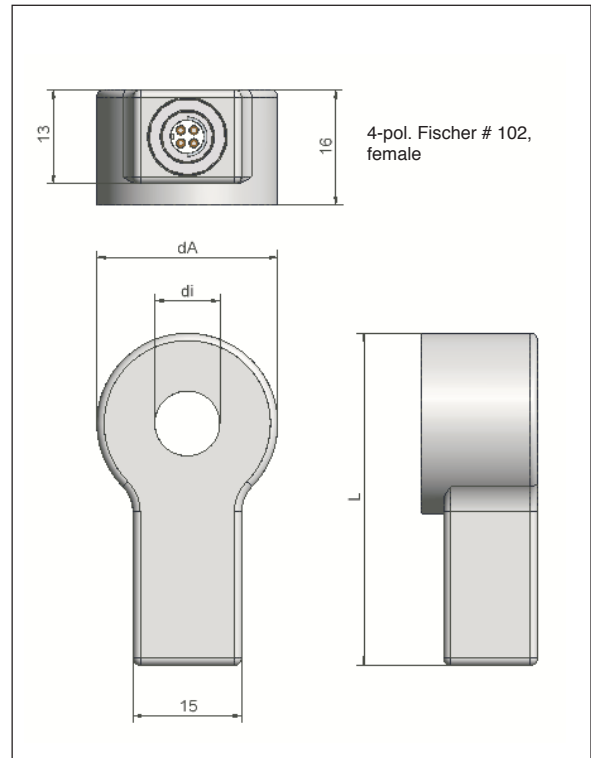
di 11,0 mm = ASP02015

di 13,0 mm = ASP02020

di 16,0 mm = ASP02030

di 21,0 mm = ASP02040

di 26,0 mm = ASP02045



PROBE DATA

APPLICATION

Crack detection on multi-layer screwed or riveted sheets. Low influence of FE-screws and rivets using a focussed ring-shaped eddy current field.

PROBE SYSTEM

Absolute ferrit core, transformatic type

FREQUENCY RANGE

30 Hz - 5 kHz

ACTIVE AREA

Depending on diameter ($d_A = d_i + 15$)

PENETRATION DEPTH

Approx. 4 - 10 mm (depending on the diameter)

TECHNICAL DATA

CABLE: All EK-X-HF/1 and EK-X-007-series cables

HOUSING: Plastics (Delrin)/stainless steel

DIAMETER: 8 - 26 mm

WEIGHT: 30 - 50 g

ORDER NO.

di 4,8 mm = ASP02004

di 6,3 mm = ASP02006

di 8,0 mm = ASP02010

di 11,0 mm = ASP02015

di 13,0 mm = ASP02020

di 16,0 mm = ASP02030

di 21,0 mm = ASP02040

di 26,0 mm = ASP02045

