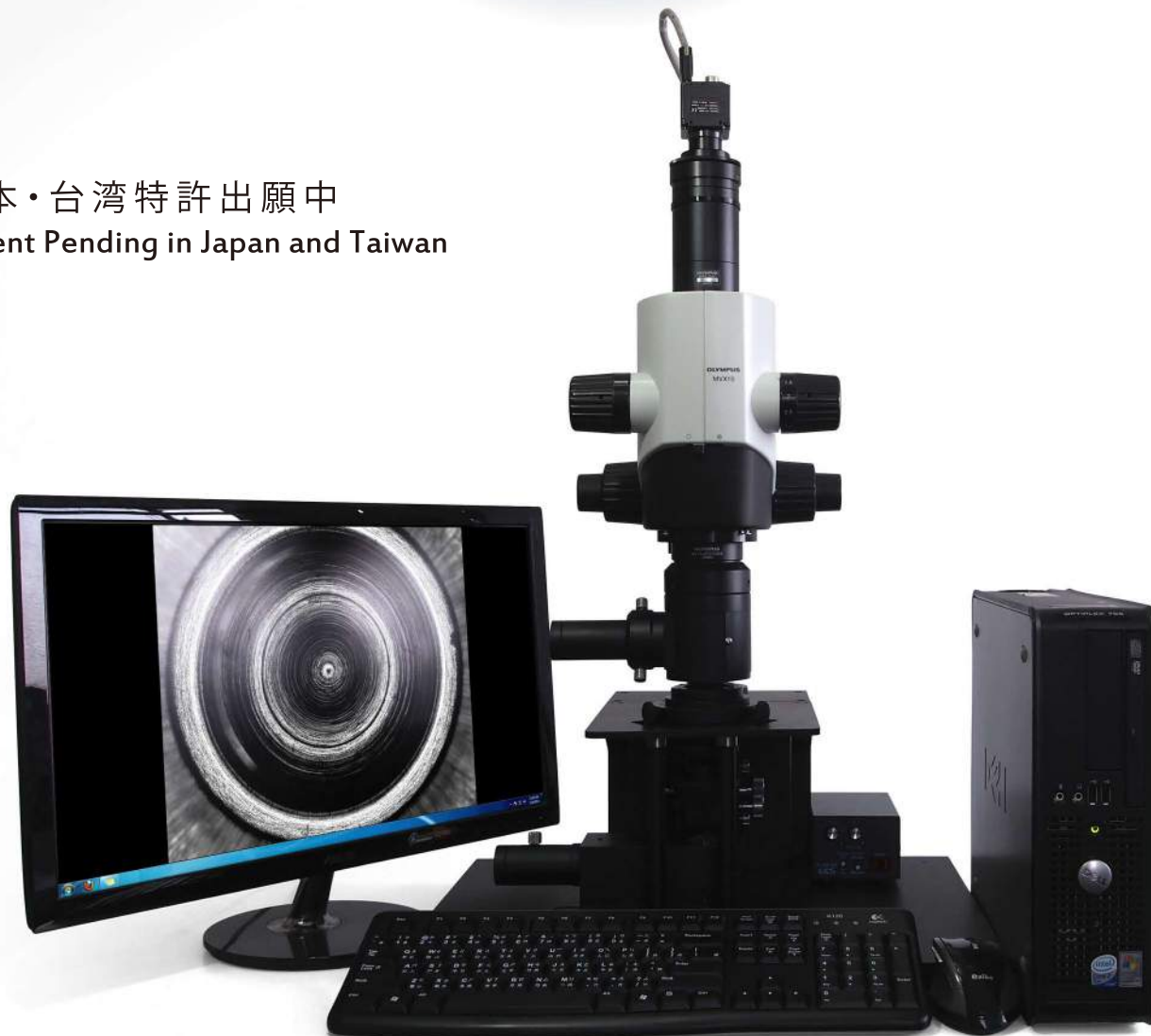


L A D I S

SPHERICAL SURFACE INSPECTION SYSTEM

球面檢查裝置

日本・台灣特許出願中
Patent Pending in Japan and Taiwan



應用領域

- 小口徑球面 / 非球面透鏡檢查
- 光學模仁檢查
- 軸承滾珠檢查
- 人工髖關節股骨頭部分的檢查

Applications

- Inspection of small-size spherical or aspherical lenses
- Inspection of lens molds
- Inspection of bearing balls
- Inspection of artificial hip joint

AUTHORIZED AGENT

總代理

嘉信檢測科技股份有限公司
Justexin Test Technology Corp.
www.justexin.com.tw

11157 台北市士林區天母北路53號3樓
3F., No.53, Tianmu N. Rd., Shilin Dist., Taipei City 11157, Taiwan
TEL: +886-2-28760180 FAX: +886-2-28740367
E-mail: infonsales@justexin.com.tw

LADIS

球面檢查裝置

專利特色

- 能快速檢查單體/Tray盤中的透鏡表面。
- 能檢查透鏡上/中/下平面的缺陷及污染。
- 能檢查模仁表面的波紋、刀痕、凹痕及污染。
- 球面/非球面能以準平面像觀察。
- 無論「小R大NA」、「大R小NA」球面皆可對應。
- 配備落射/透射照明。
- 目前唯一可兼顧廣視野/高解析的球面檢查裝置。

Features

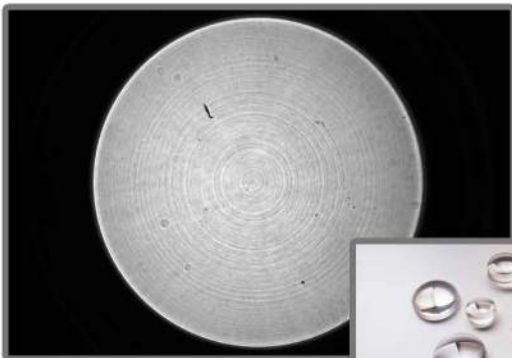
- Quick screening for the surface of single lens or molded lenses-in-tray.
- For detecting defects and contamination on upper, middle and lower lens surface.
- For detecting waviness, cutter marks, dents and contamination on lens molds.
- The spherical or aspherical surface can be observed as a near-flat image.
- For inspecting the surface with "small radius of curvature and large numerical apertures" or with "large radius of curvature and small numerical apertures".
- Vertical/Transmit illuminations are available.
- The only one system can do the inspection with both broad visual field and high resolution.

透鏡表面的波紋。

Waviness on the lens.

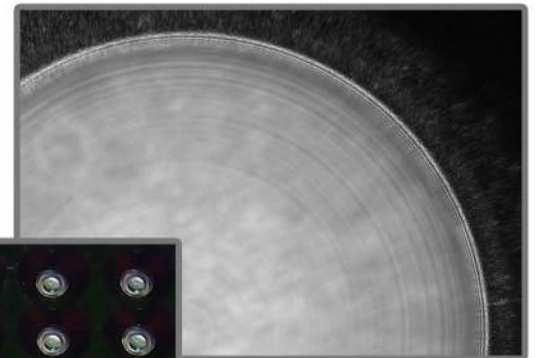
透鏡表面的刀痕。

Cutter marks on the lens.



Molded Lens

模造透鏡



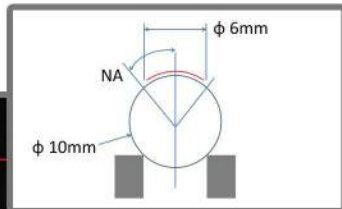
Lenses-in-Tray

在Tray盤中的透鏡



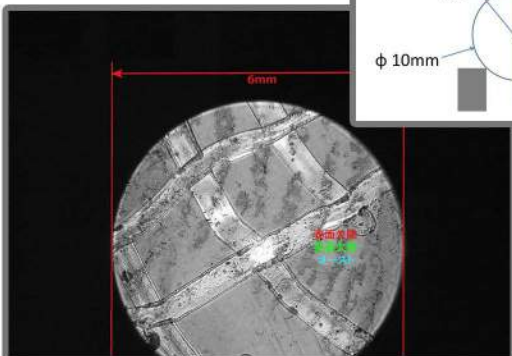
Ball Lens

球鏡



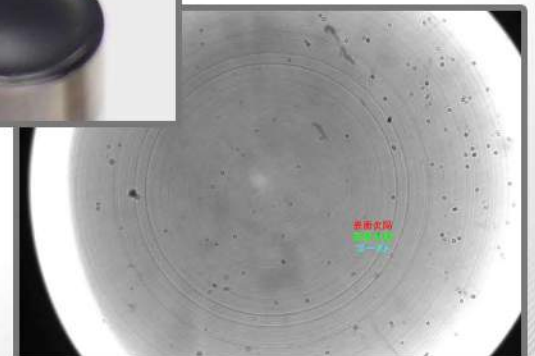
Lens Mold

模仁



球鏡能以準平面觀察。

Ball lens can be observed as a near-flat image.



模仁表面的刀痕。

Cutter marks on the lens mold.